



# BEACON FEN ENERGY PARK

Planning Inspectorate Reference: EN010151

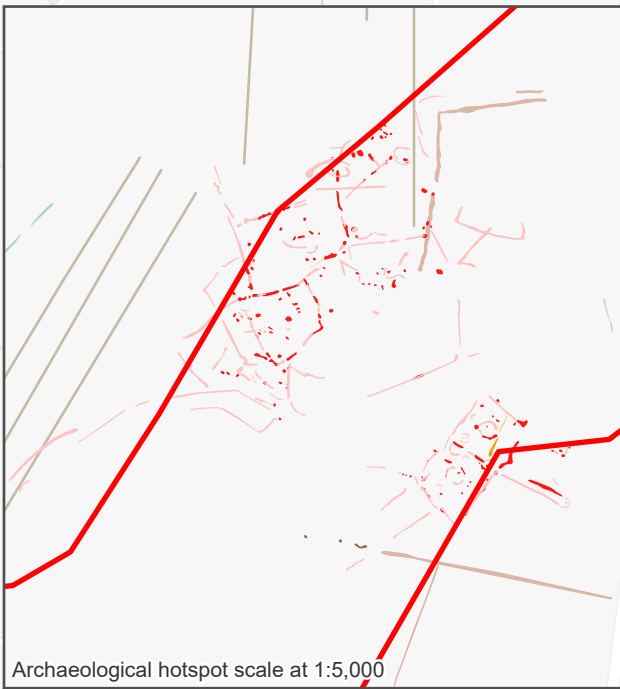
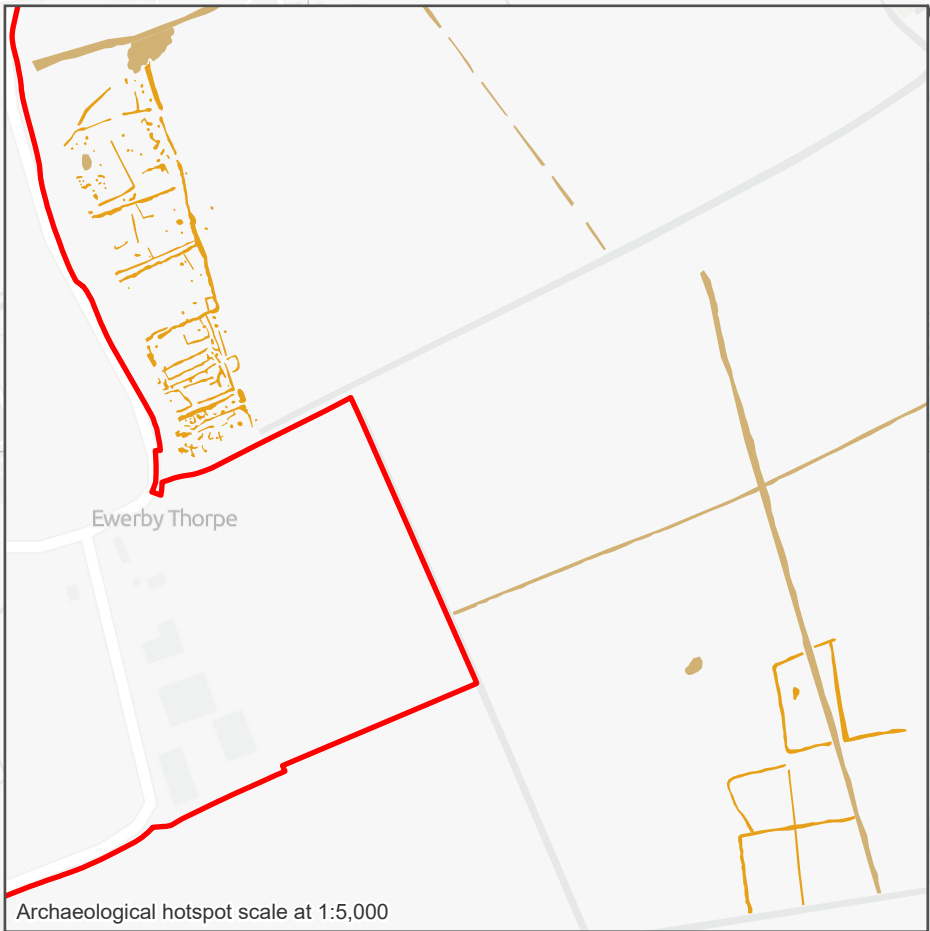
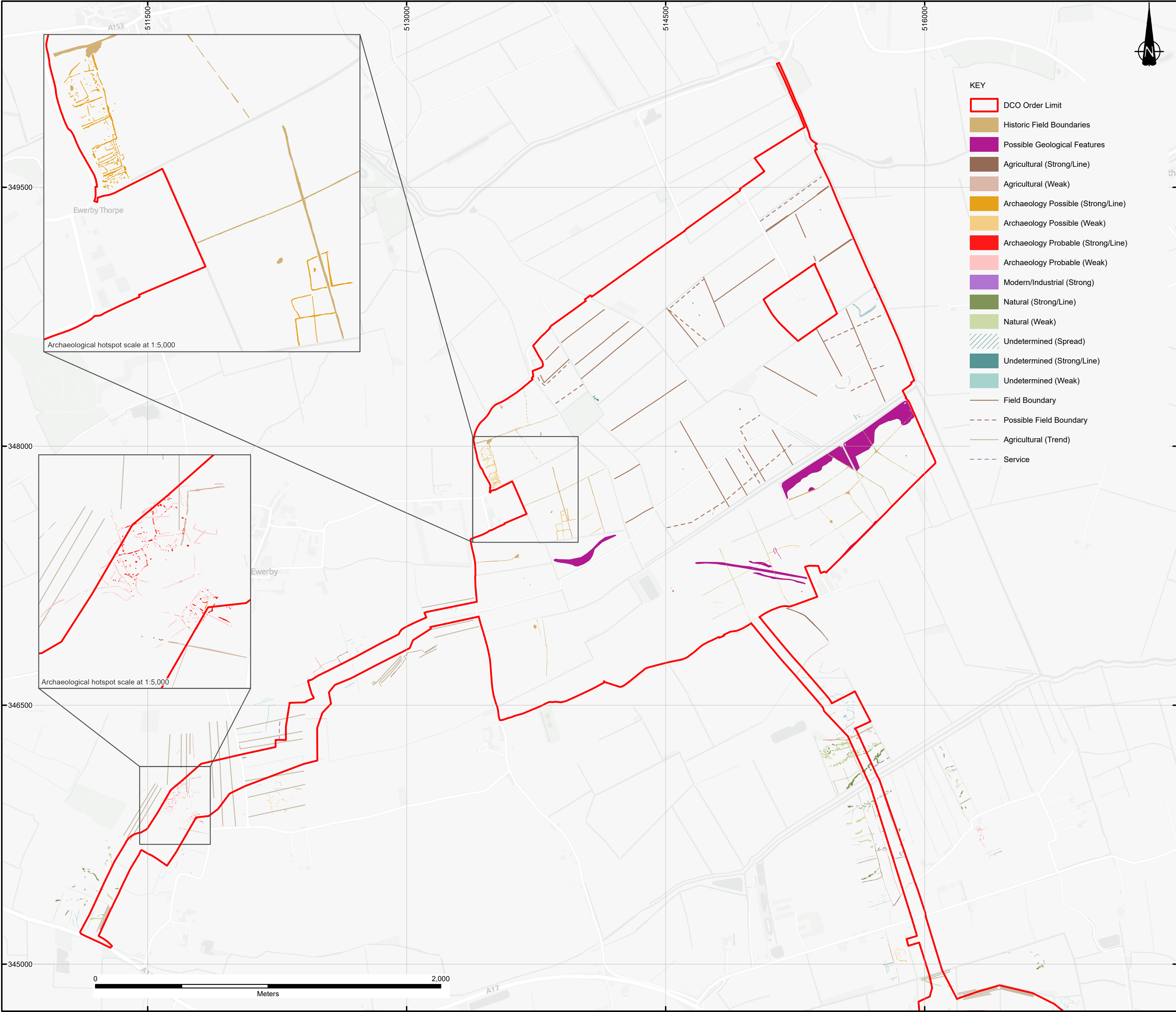
Figure 8.5 Geophysical survey interpretation of the DCO Order Limits

Document Reference: 6.4 ES Volume 3, 6.4.53

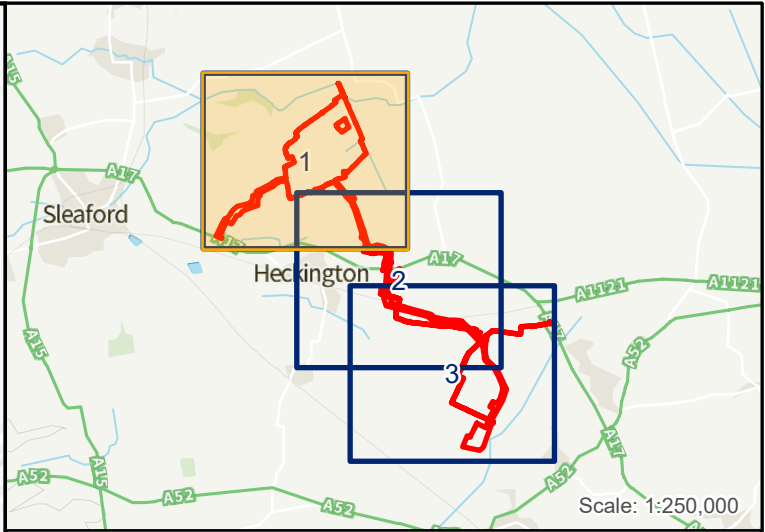
April 2025







- KEY
- DCO Order Limit
  - Historic Field Boundaries
  - Possible Geological Features
  - Agricultural (Strong/Line)
  - Agricultural (Weak)
  - Archaeology Possible (Strong/Line)
  - Archaeology Possible (Weak)
  - Archaeology Probable (Strong/Line)
  - Archaeology Probable (Weak)
  - Modern/Industrial (Strong)
  - Natural (Strong/Line)
  - Natural (Weak)
  - Undetermined (Spread)
  - Undetermined (Strong/Line)
  - Undetermined (Weak)
  - Field Boundary
  - Possible Field Boundary
  - Agricultural (Trend)
  - Service



**Notes:**




Excluding the DCO Order Limits, boundaries shown are indicative

DCO Order Limits provided by Ardent Management on 04/02/2025

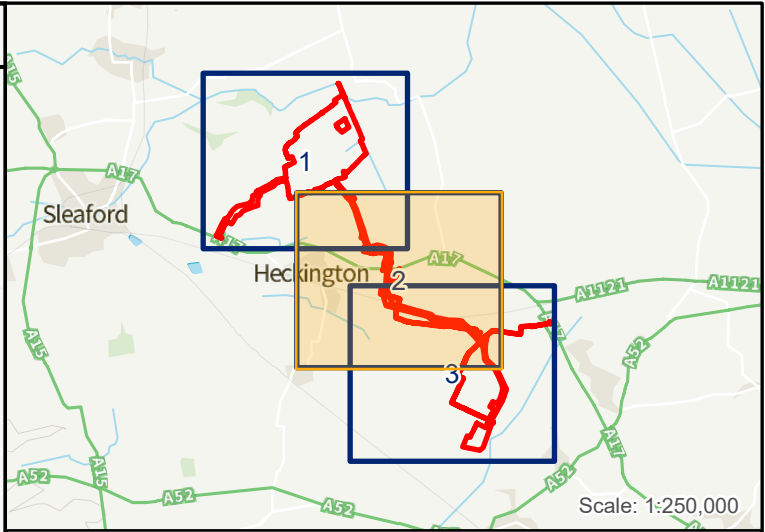
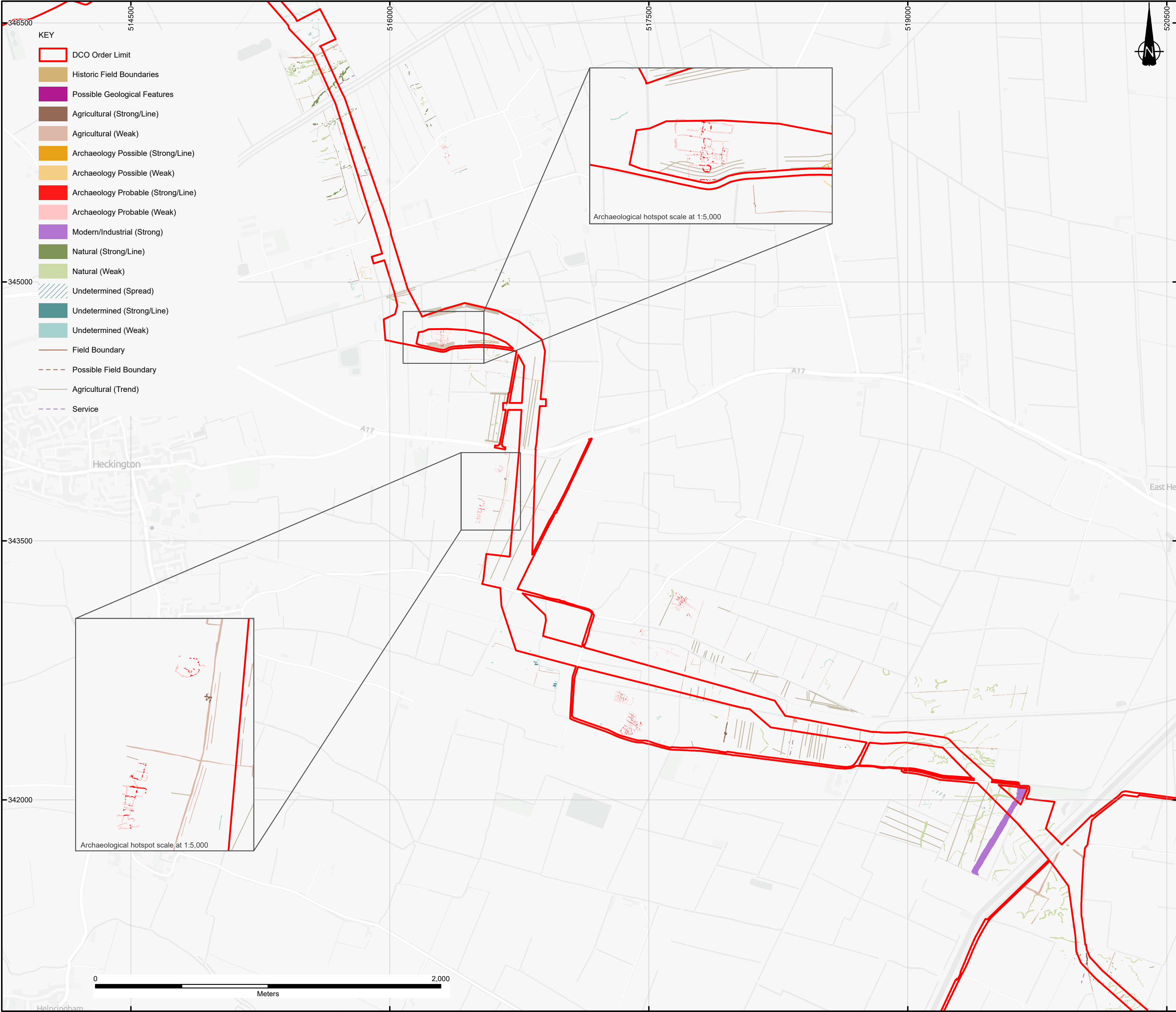
Geophysical Survey Data provided by Wessex Archaeology, Headland Archaeology and Magnitude Surveys Ltd.

Ferrous, agricultural, modern and natural spreads, ridge and furrow, agricultural and drainage lines and ferrous points removed for clarity.

Contains OS data © Crown Copyright and database right 2025  
Contains data from OS Zoomstack

1	First Issue	07/03/25	HP	LP	AH
REVISION	DETAILS	DATE	DRAWN	CHKD	APPD
CLIENT					
BEACON FEN ENERGY PARK LTD					
PROJECT					
BEACON FENN ENERGY PARK					
DRAWING TITLE					
FIGURE 8.5 GEOPHYSICAL SURVEY INTERPRETATION OF THE ENTIRE SCHEME SHEET 1 OF 3					
DRG No		REV	SUIT. CODE		
ST19595-375		1	--		
DRG SIZE		SCALE		DATE	
A2		1:15,000		07/03/2025	
DRAWN BY		CHECKED BY		APPROVED BY	
HP		LP		AH	
<div><div><div><div>wardell</div><div>armstrong</div></div></div><div><div>PART OF</div><div>SLR</div></div></div> <div></div>					





**Notes:**




Excluding the DCO Order Limits, boundaries shown are indicative

DCO Order Limits provided by Ardent Management on 04/02/2025

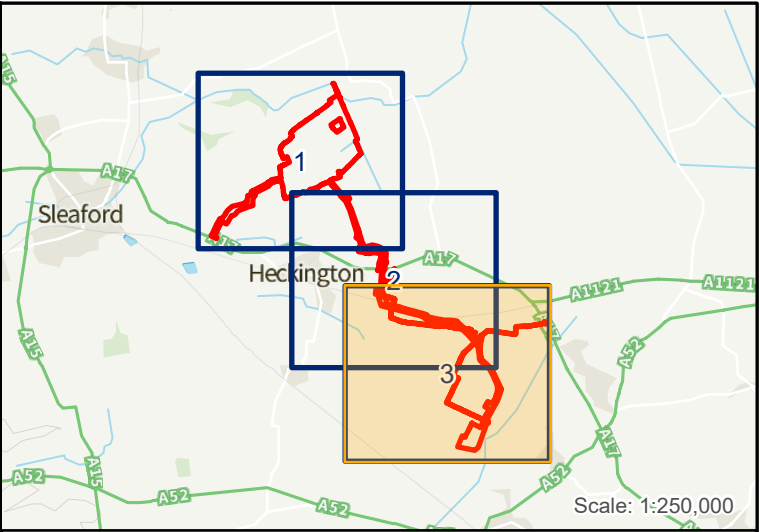
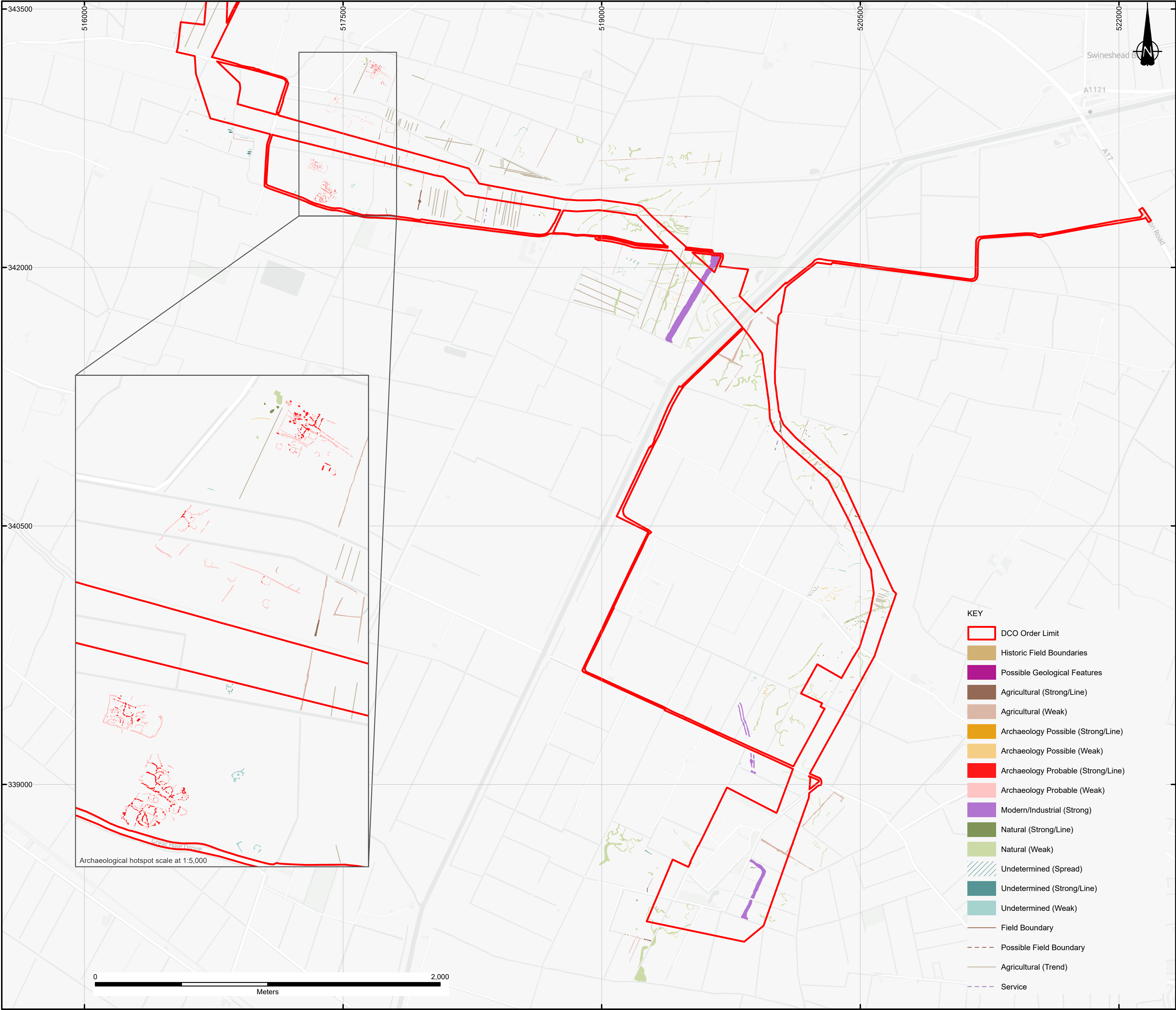
Geophysical Survey Data provided by Wessex Archaeology, Headland Archaeology and Magnitude Surveys Ltd.

Ferrous, agricultural, modern and natural spreads, ridge and furrow, agricultural and drainage lines and ferrous points removed for clarity.

Contains OS data © Crown Copyright and database right 2025  
Contains data from OS Zoomstack

1	First Issue		07/03/25	HP	LP	AH
REVISION	DETAILS		DATE	DRAWN	CHKD	APPD
CLIENT						
BEACON FEN ENERGY PARK LTD						
PROJECT						
BEACON FENN ENERGY PARK						
DRAWING TITLE						
FIGURE 8.5 GEOPHYSICAL SURVEY INTERPRETATION OF THE ENTIRE SCHEME SHEET 2 OF 3						
DRG No			REV	SUIT. CODE		
ST19595-375			1	--		
DRG SIZE		SCALE	DATE			
A2		1:15,000	07/03/2025			
DRAWN BY		CHECKED BY	APPROVED BY			
HP		LP	AH			
 PART OF						
						





**Notes:**


Excluding the DCO Order Limits, boundaries shown are indicative

DCO Order Limits provided by Ardent Management on 04/02/2025

Geophysical Survey Data provided by Wessex Archaeology, Headland Archaeology and Magnitude Surveys Ltd.

Ferrous, agricultural, modern and natural spreads, ridge and furrow, agricultural and drainage lines and ferrous points removed for clarity.

Contains OS data © Crown Copyright and database right 2025  
Contains data from OS Zoomstack

1	First Issue		07/03/25	HP	LP	AH
REVISION	DETAILS		DATE	DRAWN	CHKD	APPD
CLIENT						
BEACON FEN ENERGY PARK LTD						
PROJECT						
BEACON FENN ENERGY PARK						
DRAWING TITLE						
FIGURE 8.5 GEOPHYSICAL SURVEY INTERPRETATION OF THE ENTIRE SCHEME SHEET 3 OF 3						
DRG No			REV	SUIT. CODE		
ST19595-375			1	--		
DRG SIZE		SCALE	DATE			
A2		1:15,000	07/03/2025			
DRAWN BY		CHECKED BY	APPROVED BY			
HP		LP	AH			
 PART OF 